

dasso China

Add: Xinhe, Linpu, Xiaoshan, Hangzhou, China 311251
Tel: 86.0571.5716.3765
Fax: 86.0571.5716.3700
Email: info@dassogroup.com
Web: www.dassogroup.com

the magnet®

Add: Rambla Solanes 38/40
08940 Cornellà de Llobregat (Barcelona)
Tel: +34 93 508 65 80
Fax: +34 93 508 65 90
Web: www.exterpark.com



Dasso Fused Bamboo

for Magnet Installation System



DURABLE
INNOVATIVE
SUSTAINABLE

REUSABLE
ASSEMBLY
INVISIBLE PROFILE



dasso.bamboo



dasso group, founded in 1993, is the global leader and innovator of the bamboo industry. With over 27 years' history of manufacturing bamboo, dasso now have 8 manufacturing facilities and over 1000 employees, in addition to owning over 2,700 acres of productive, sustainable bamboo forest in China.

dasso has the most advanced crafts, technology and automated manufacturing equipments; we gathered some of the most talented people to develop the most perfect management system for production and quality control, which enable dasso to provide the bamboo products with superior quality and become the most powerful integrated solution provider for bamboo products. dasso offers dassoFLOORING, dassoELEMENTS, dassoXTR®, dassoCTECH® as regular product range.

In addition to conventional products, dasso group cooperates with design institutes and developers in order to provide customized products, such as: the bamboo fire-resistant ceiling of Madrid International Airport; Bamboo acoustic material of Wuxi Grand Theater; special bamboo elements in Culture and Art Center of Fuzhou Strait ... until now, we have completed more than 1,000 projects in more than 40 countries all over the world.



Hangzhou Dasuo Technology Co.,Ltd

Multi-purpose production facility produces 2 million m² per year.



Hangzhou Zhuangyi Furniture Co.,Ltd

Furnishing Plant 400 x 40 FCL container per year.



Fujian Dasso Industry Co., Ltd

It will be in production by February 2020, with an annual production (dassoXTR & dassoCTECH) capacity of 2 million m².with additional facilities for further expansion.



Zhejiang Daocheng Bamboo Industry Co., Ltd

An overseas sales team of dasso bamboo products, whose business is around the world with more than 50 staffs.



Jiangxi Zhushang Bamboo Industrial Co.,Ltd

dassoXTR production facility produces 1 million m² per year.



Zhujia Gallery

Integrated design, development, sales and promotion of green bamboo, original design of bamboo crafts.



Zhejiang Xinhaiye Bamboo Technology Co.,Ltd

dassoXTR production facility produces 500,000 m² per year.



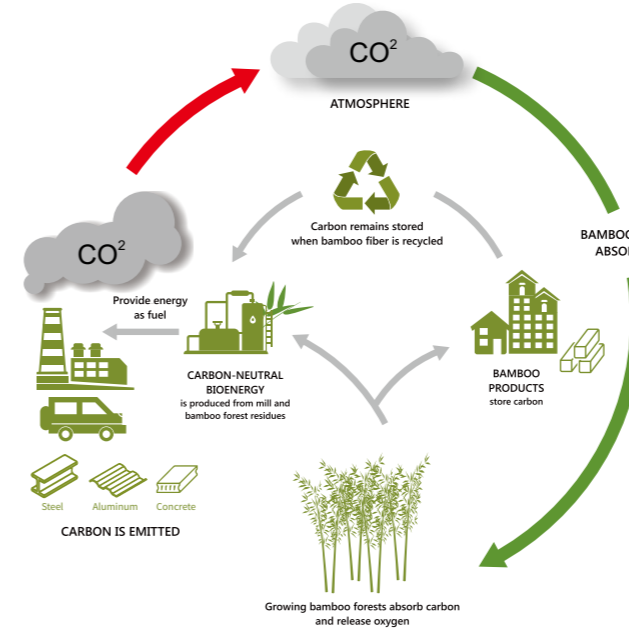
Shunchang Zhujia Bamboo Industrial Co.,Ltd

Multi-purpose production facility produces 200,000 m² per year.

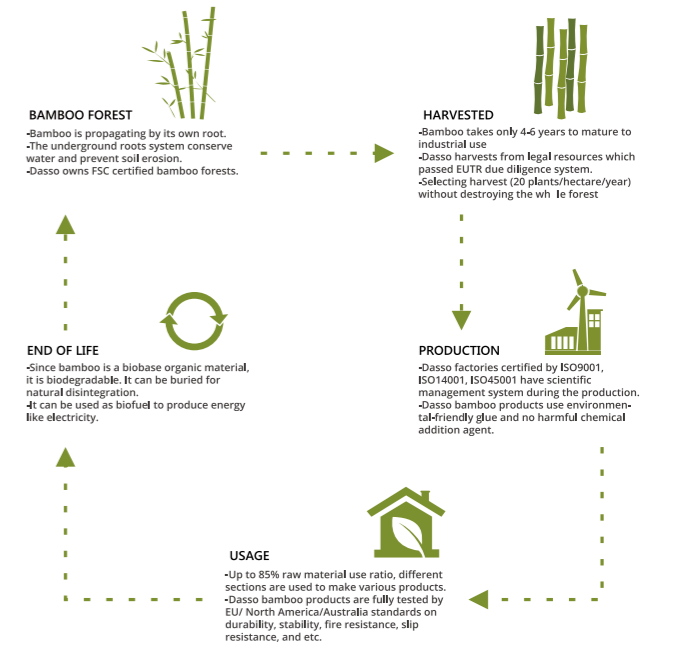


Sustainable of fused bamboo

BAMBOO FOREST CONTRIBUTES TO GLOBAL CARBON CYCLE

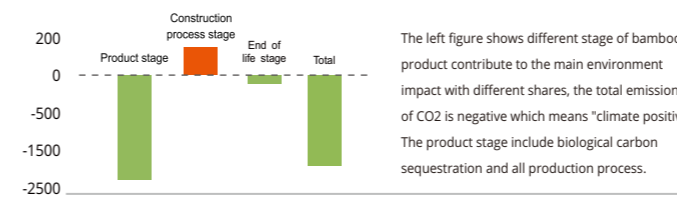


SUSTAINABLE LIFE CYCLE OF BAMBOO PRODUCTS

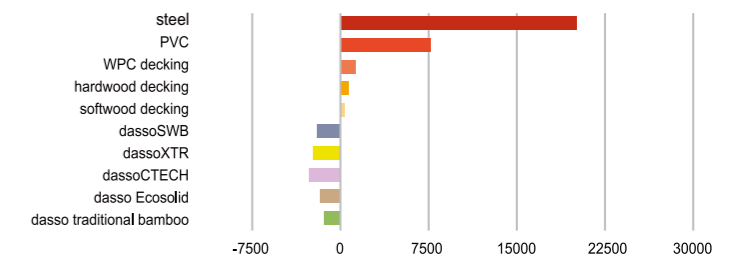


Life Cycle Assessment (LAC) of dasso Bamboo Products - Carbon Footprint & Comparison of other Materials

Carbon footprint in each life stage of bamboo products (kg CO2/M3)



Carbon footprint bamboo VS other material (kg CO2/M3)



Dasso Bamboo Products have been EPD Certified & Bamboo Material Provide Credits for the Green LEED Building Certification

Criteria LEED	Aspect	Points	dasso Traditional Bamboo	dasso SWB	dasso Ecosolid Bamboo	dassoXTR	dassoCTECH
Material & Resources	Building product disclosure and optimization -environmental product declaration	EPD	★	★	★	★	★
	Building product disclosure and optimization - sourcing of raw materials	Responsible sourcing of raw materials	★	★	★	★	★
	Building product disclosure and optimization - material ingredients	Chemical inventory					★
Innovation	Innovation strategy	1-5			★	★	★



dassoXTR and dassoCTECH
EPD No.: S-P-01928

We are facing a significant global warming and rapid depletion of resources. It is our duty and responsibility to choose green and renewable resources and reduce carbon emissions.

Dasso Fused Bamboo for Exterior Use

Dasso developed Fused Bamboo Decking – dassoXTR&dassoCTECH to match Magnet Installation System, with patented invisible profiling, magnet clips and a wide range of components. It comes out sustainable and high-durable top decking with invisible gap, accessible and easy installation. Applied at the walkway, boardwalk, terrace, balcony, dock for commercial and residential.



XD20-SG2-5XP-PSS
Size: L1855*W137*T20



ED20-SG2-5XP-PSS
Size: L1855*W137*T20

Fused Bamboo VS Other Exterior Materials

Competitive Material	dassoCTECH	dassoXTR	Ipe	Balau(Bangkirai)	Teak	Meranti Batu	Western Red Cedar
Density(kg/m3)	1,200	1,100	1,060	850	655	480	340
Stiffness MOE(MPa)	16,700	14,490	22,070	16,950	11,280	11,390	7,660
Janka Hardness(N)	17,659	16,992	15,620	7,120	4,740	2,460	1,560
Durability(Class)	1	1	1-2	2	1-3	3-4	2

The Feature of Fused Bamboo



Termite Resistance

Reticulitermes santonensis
DC D(durable)
[EN 117]
Class 1:AS 5604 (2005)



Mould Resistance

Class 0
[DIN EN ISO 846: 1997-10]
[DIN EN 152: 2011]



Fire Resistance

Class A:ASTM E84
Bfl -s1:EN13501-1
BAL 29:AS 1530.8.1-2007



Environment Friendly

Ready for harvest after 4-6 years
[compared to up to 100 years for
hardwood species]-no deforestation



Hard & Durable

Brinell > 9.5Kg/mm2 [EN1534], harder
than any other hardwood.
Durability: Class 1
[CEN/TS 15083-1: 2005][EN 350: 2016]



Warranty

Applicable Residential and
Commercial Warranty

Dasso Fused Bamboo for Magnet Installation System



Magnet Clip

The magnet clip is actual clip performance and stability, fully made of POM with excellent dimensional stability even at extreme conditions. It's flexible springs, auto block, easy rotation and easy entrance. **It's patented by exterpark.**

The Advantage of the magnet installation



Invisible Gap

- BETTER LOOK – No visible gaps nor under structure, but still have an optimum water drainage and good air flow circulation.
- SAFER – Nothing can get stuck such as high heels or finger, no loss of valuables such as coins, rings or keys.



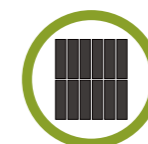
100% Accessibility and Reusable

- Total access for any board individually in any part of decking, cladding and soft with a single spatula.
- Quick, simple and trouble-free installation or uninstallation.
- Top bamboo board is reusable.



Assembly with Magnet

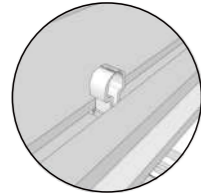
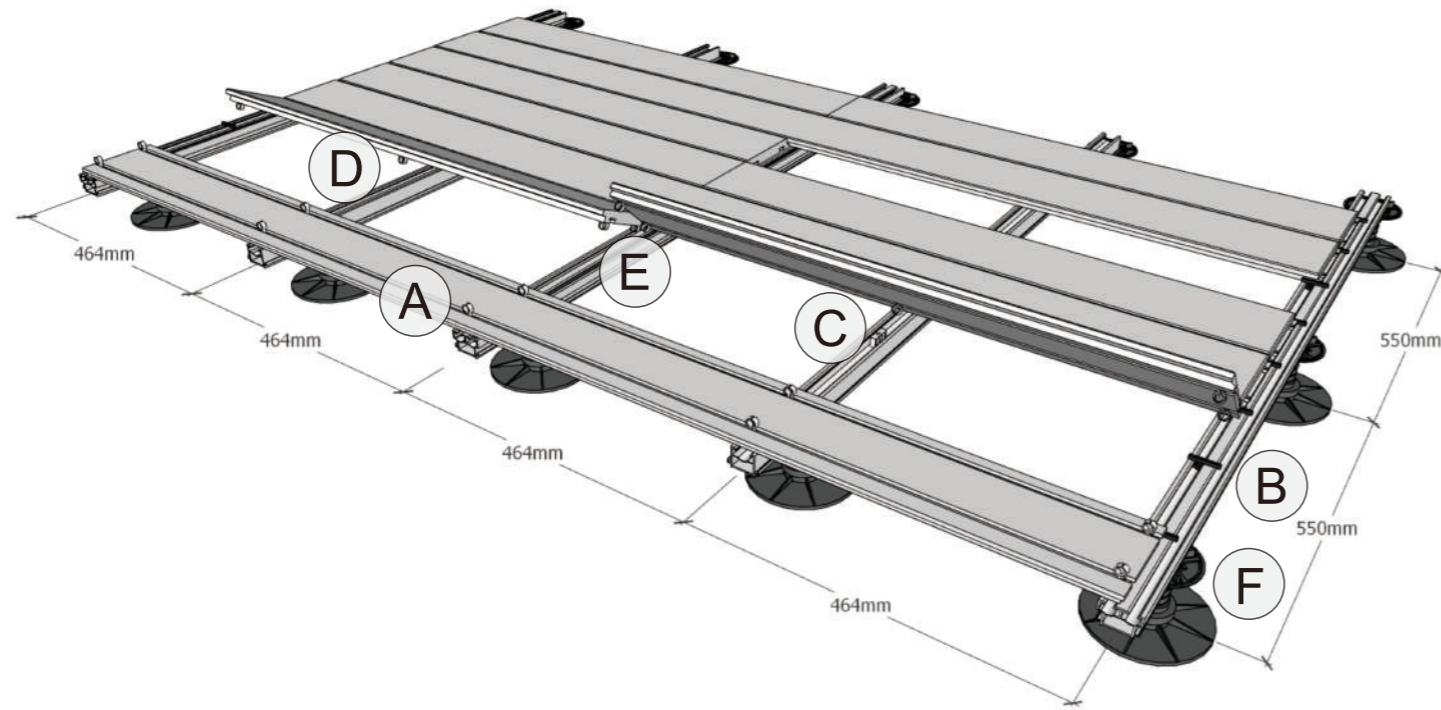
- An advanced mechanical locking with superior grip which holds boards stronger than a screw but yet flexible to open up and close again when necessary.
- The process of assembly is Easy (No Screws), Fast (No pre-drilling), Silent (No Tools) and Cost-efficient.



A lifetime foundation

- Build it with a lifetime foundation.
- Improved loading capacity to more than 4.000kgs per m².
- Save costs and time by using less pedestals.
- Fixed lengths of 2200mm.

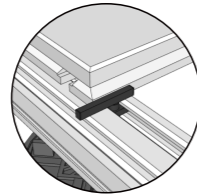
The Magnet System Works over 6 Essential Elements



A

Magnet Clip

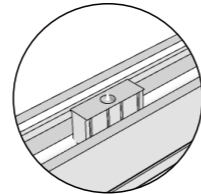
at the bottom of each board to allocate magnet clips.



B

Spacer

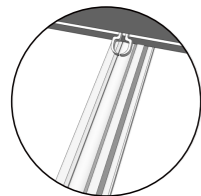
between boards to leave 4mm invisible drainage and ventilation gap.



C

Blocker

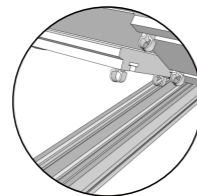
to keep all boards always in same place and prevent horizontal movement.



D

Aluminum Joist Double

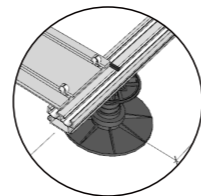
with a very specific and accurate geometry for the magnet clip to click inside; Pedestals and Wedges Levelling instruments.



E

Aluminum Joist Single

for the short-end connections, which is a must for the good performance of the product.



F

Base/Pedestals

Height Adjustable Pedestals from 5 up to 40 CM Levelling Wedges for an easy and accurate leveling

Installation Accessories

Product	Product Code	Description	Photos
Magnet Clip	XP-001	Fixed sheet fasteners (POM)	
Spacer	XP-002	Gap control fasteners between boards (Rubber)	
Blocker	XP-003	prevent longitudinal sliding (Steel and POM)	
Aluminum Joist Double	XP-004	Superior mechanical properties to hold clips Upgraded stability (Aluminum)	
Aluminum Joist Single	XP-005		
Base/Pedestals	XP-006	Joist support (Plastic)	
Wedges	XP-007	Plastic piece that tapers to a thin edge and is used for balance decking, raising heavy structures, or for tightening by being driven into something. Leveling wedges from 1 up to 20 mm.	
Aligner	XP-008	Steel; Using the magnet aligner tool, any board can be installed easily.	
Disassembling Tool	XP-009	Steel; Using the Disassembling Tool, any boards can be opened up easily	

The Magnet System Installation Instruction

1. If the base is water absorbing, it is advisable to install a plastic sheet to work as humidity barrier.
2. Use the height adjustable pedestals to level the area, and the pedestals should be placed at 55cm span along the aluminum joist.
3. Aluminum joists should be laid at 46.4 cm span between them. Cross joist can be used to make the operation easy and accurate.
4. Do a thorough lever check on all deck area to ensure the foundation of the deck/terrace will be flat and solid. Do last pedestal level adjustment to avoid bounce effect.
5. Take the board upside down in the position you want to install it across aluminum joist and insert the Magnet clips using the Magnet Aligner tool. Insert the magnet clip and twist it to lock. Use 2 Magnet clips at all joists connections.
6. Use one Blocker at the middle of per board to prevent longitudinal slide.
7. Turn the board around and click it in.
8. Place the spacers at all board connections and alternate joists.

Color Fading & Maintenance

Fused Bamboo (dassoXTR and dassoCTECH) are natural product, its appearance may vary in grains and colors. When exposed under the natural sunlight over time, the appearance and color may change depending on the extent of UV light exposed to the material. The XTR boards originally have a dark brown color and the CTECH in Cognac, both will lighten up over several weeks or months. The board's color without regular maintenance will eventually grey out to a nice silver patina just like any hardwood exposed to sunlight. If a brown color is preferred, maintenance should be done with an exterior penetrating oil. Stains could be added to the penetrating oil to achieve a desired color of the finish product. Maintenance Instruction is available on dassoGroup.com

dassoXTR



New

Fading

After Maintenance

dassoCTECH



New

Fading

After Maintenance

Normal Phenomena

Checks and cracks on the surface and on the ends of the boards can arise from the different drying characteristics of the surface and cross-cut ends. This does not affect the structural soundness of the boards.

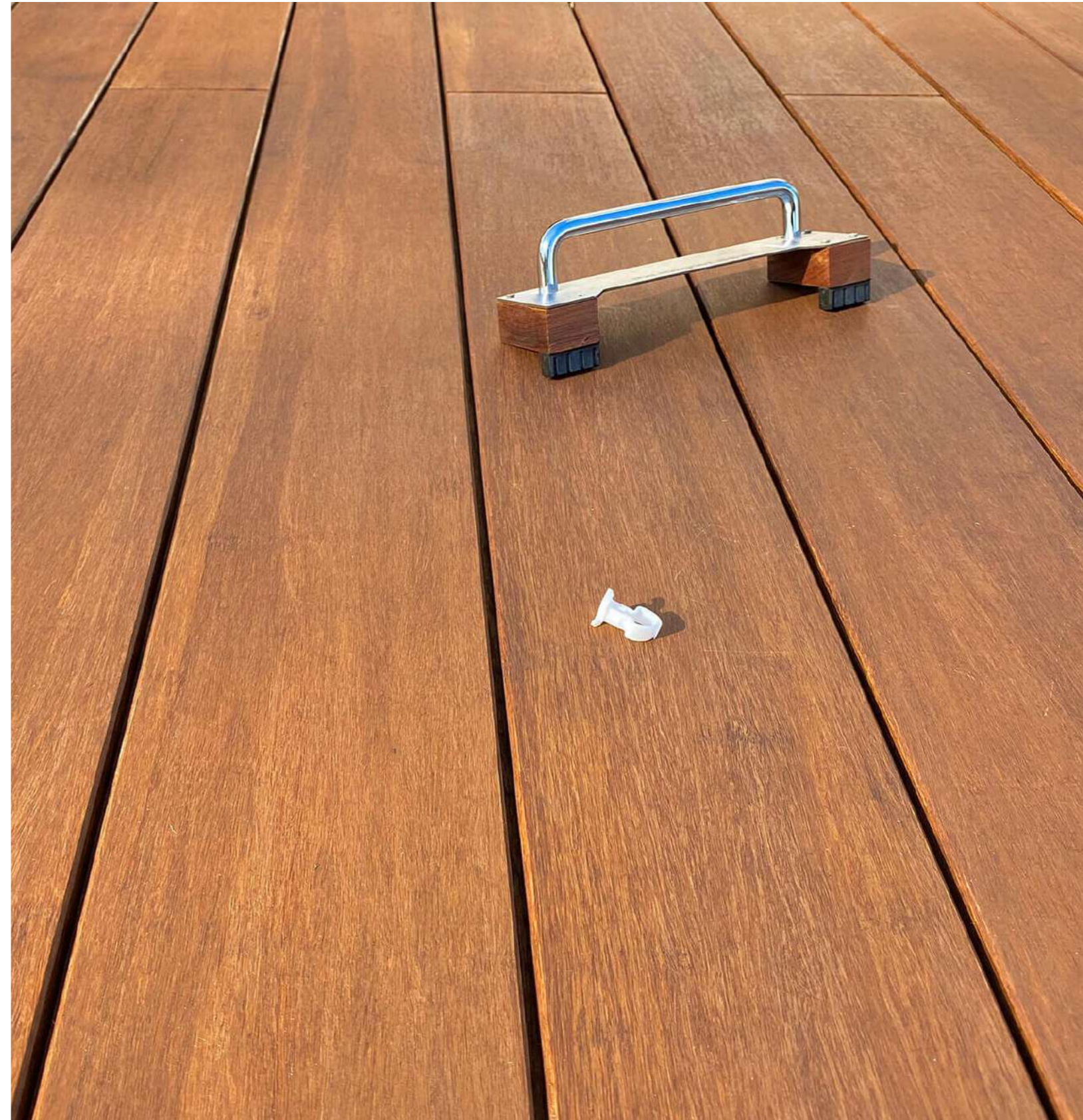
Project Reference - Tourism College of Zhejiang (Qiandao Lake Campus)

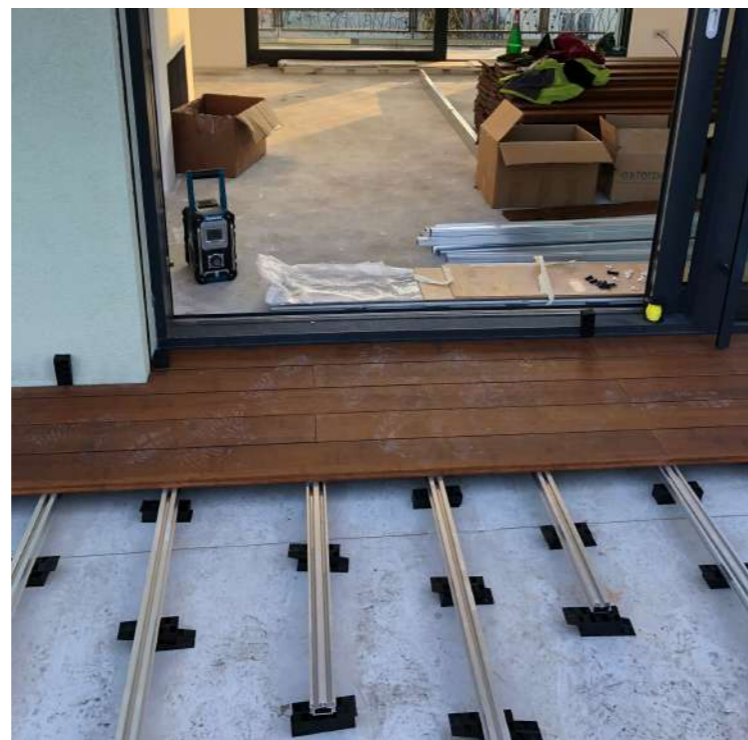
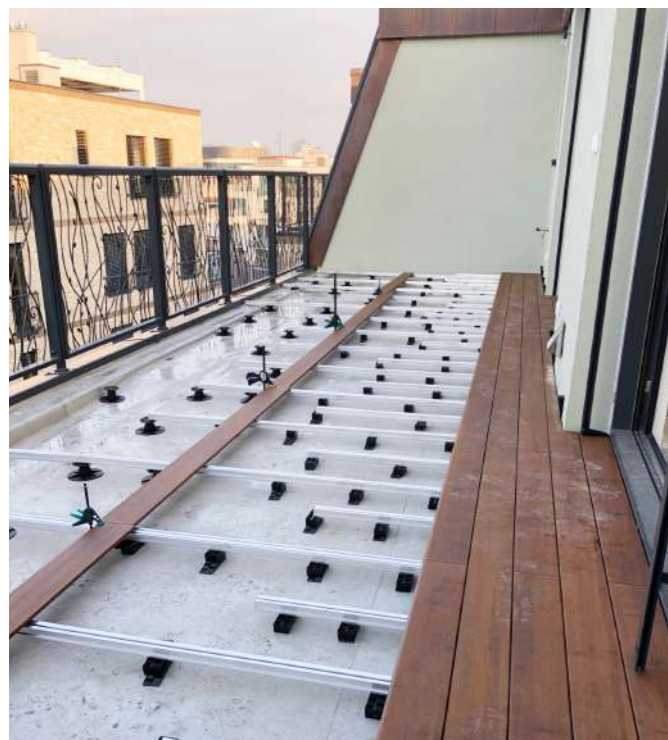
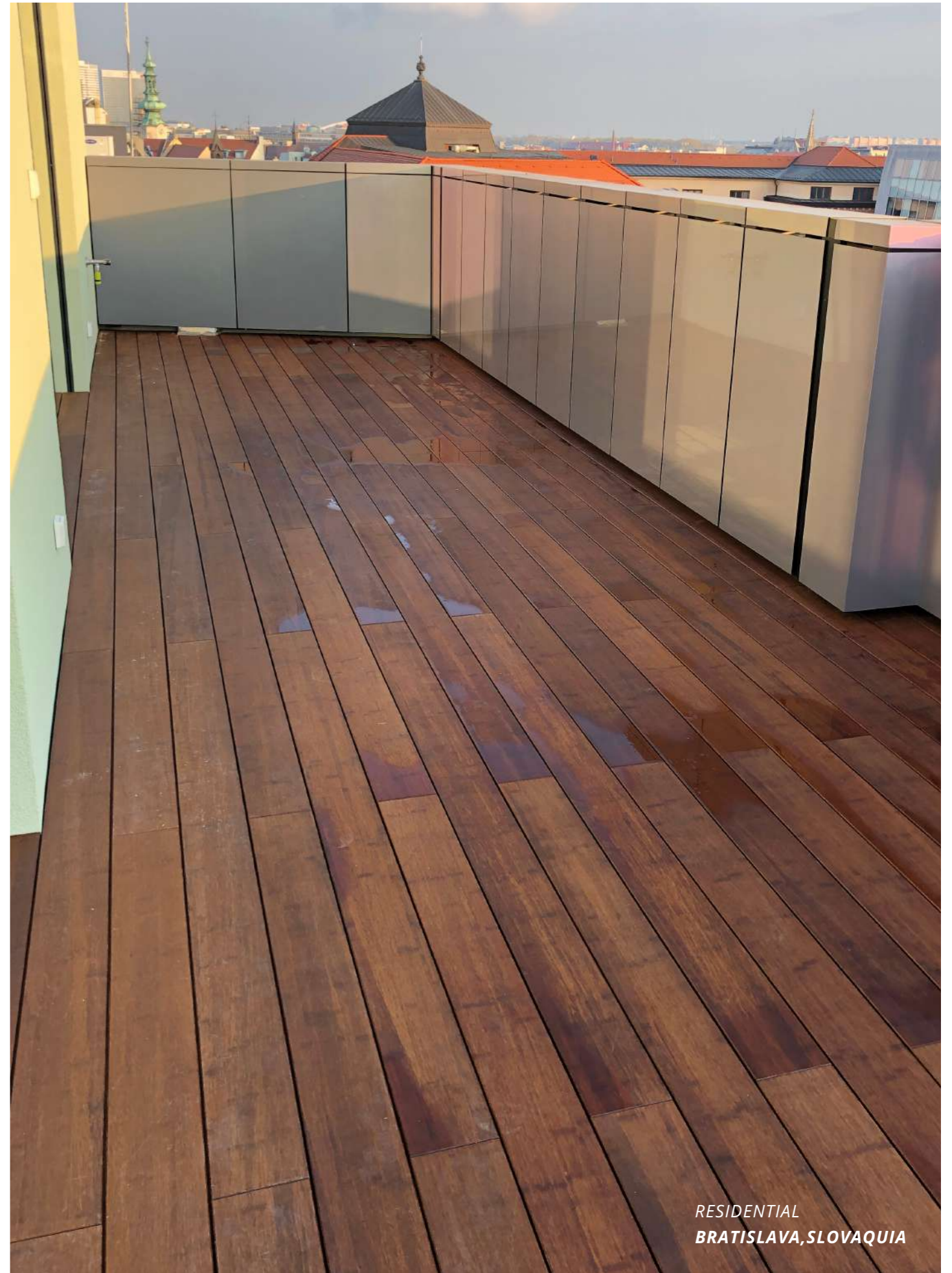
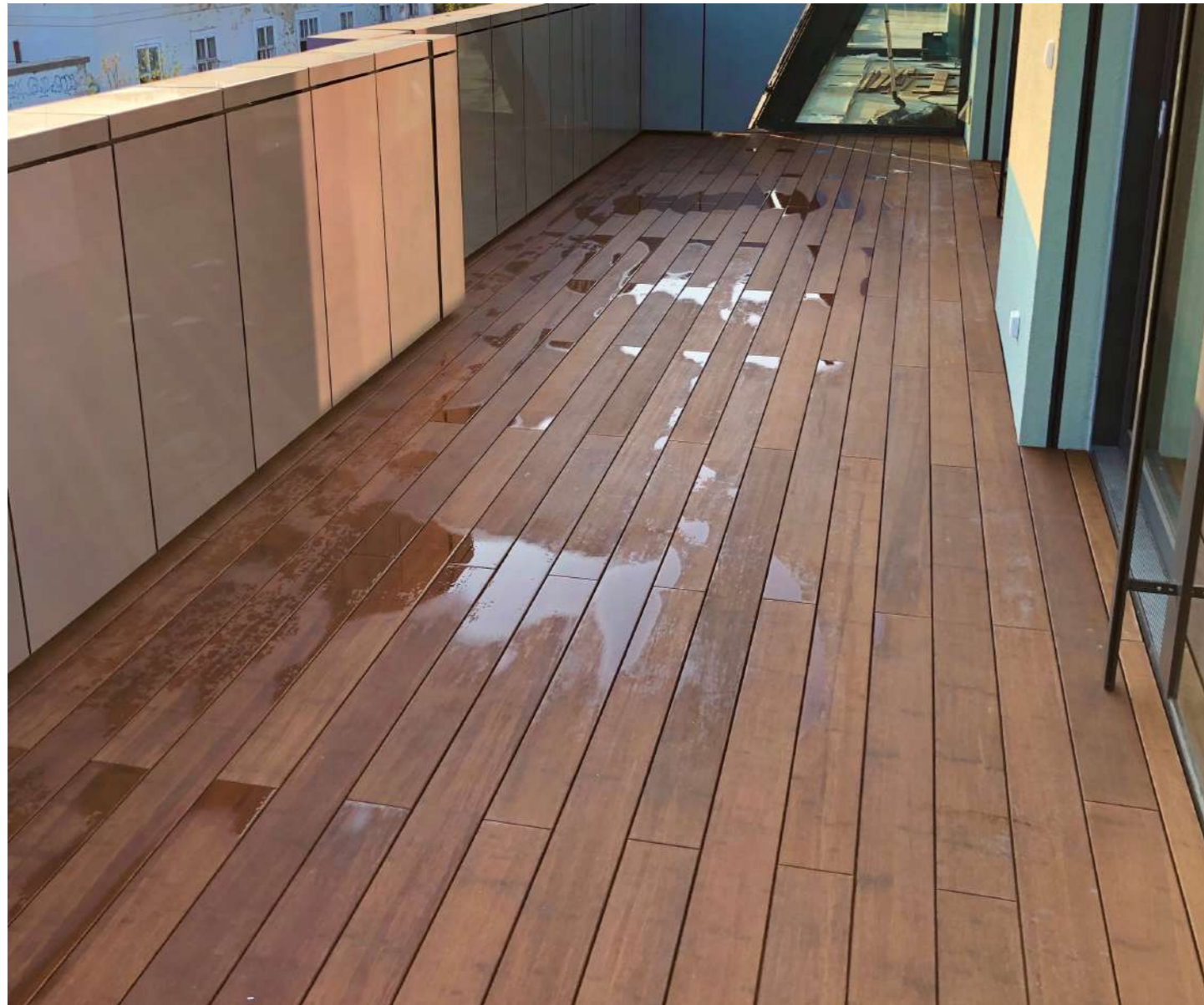


Installed in 2013

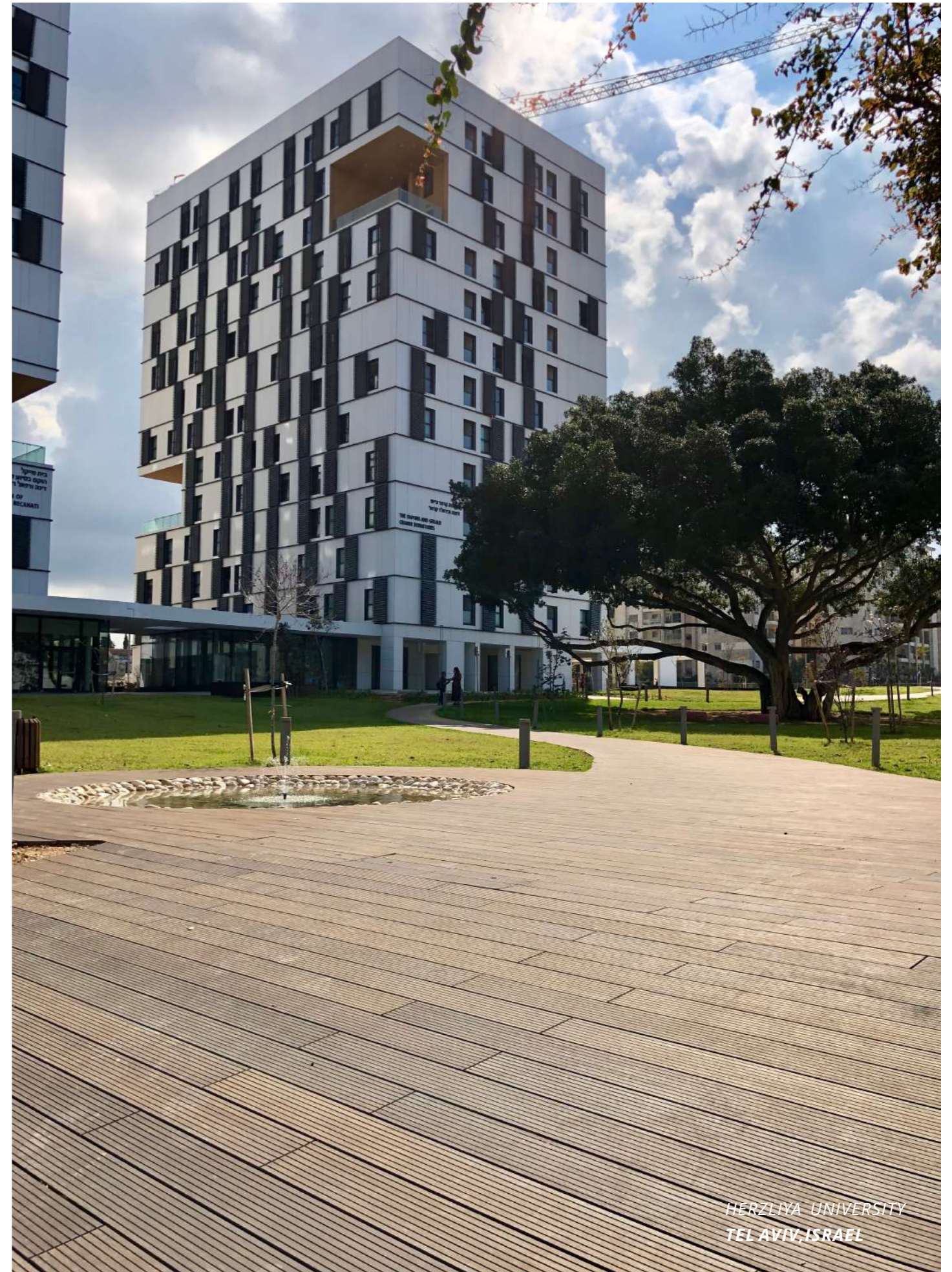


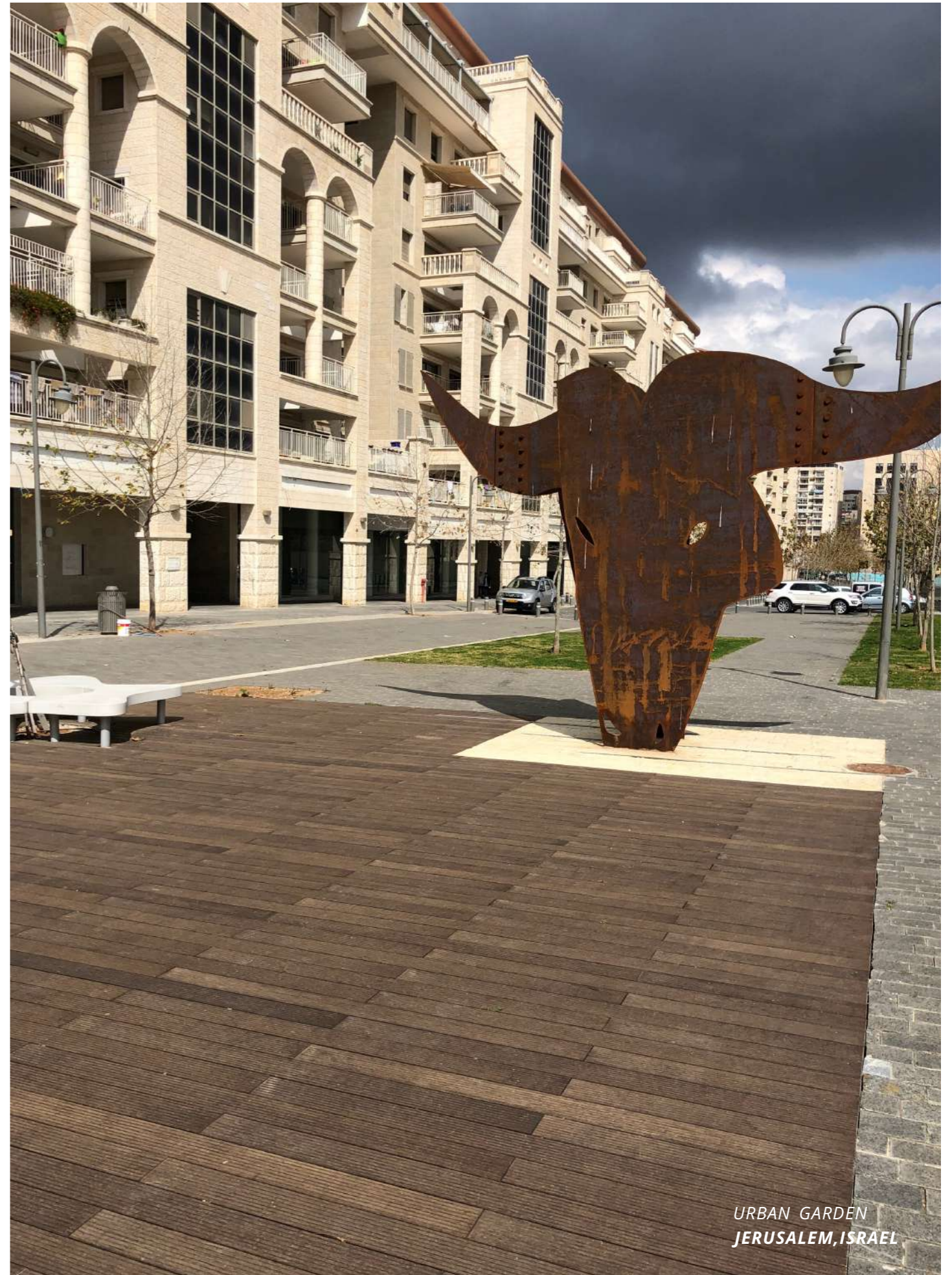
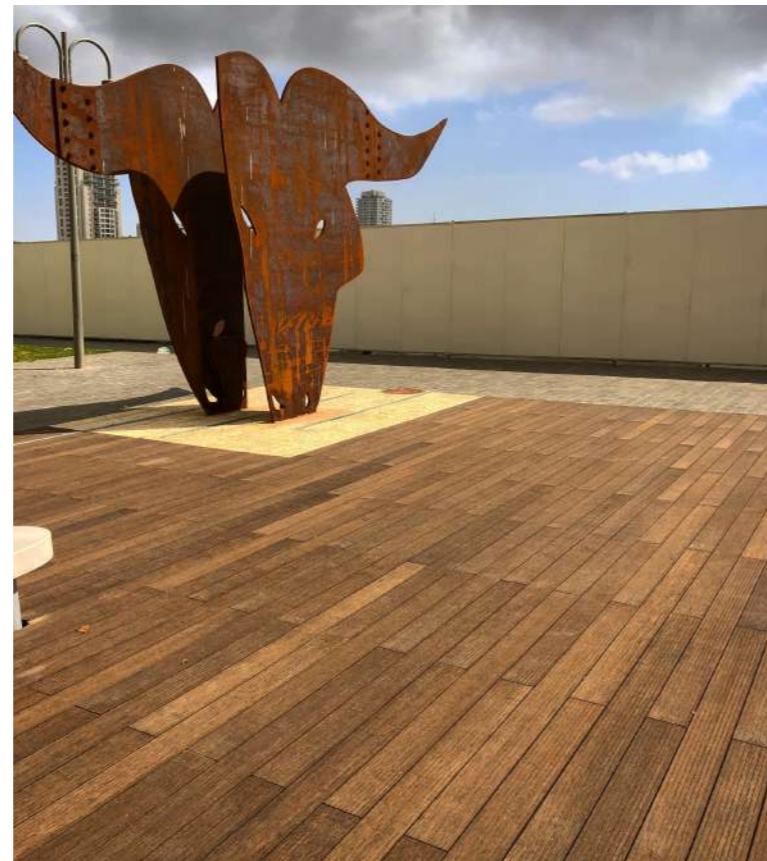
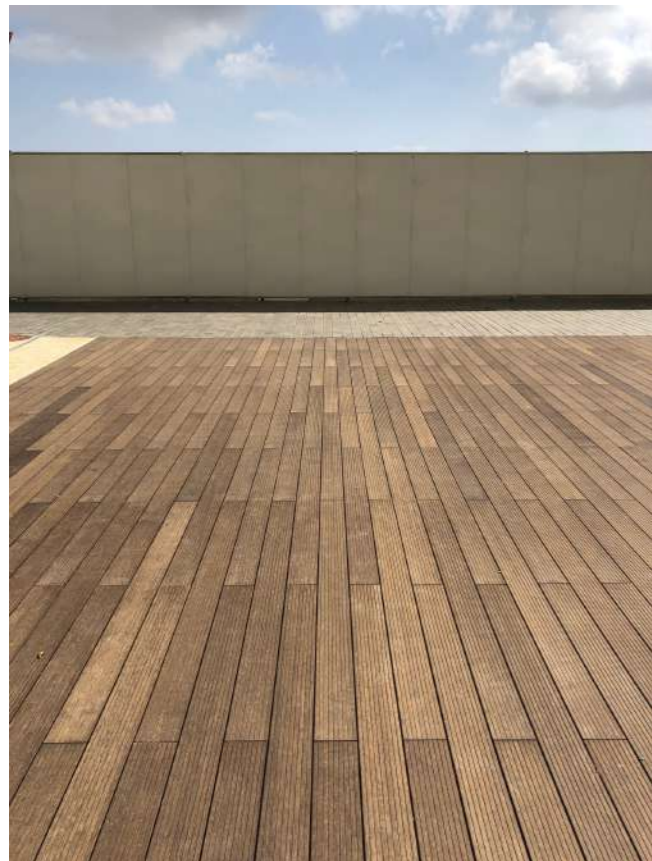
Revisited in 2019

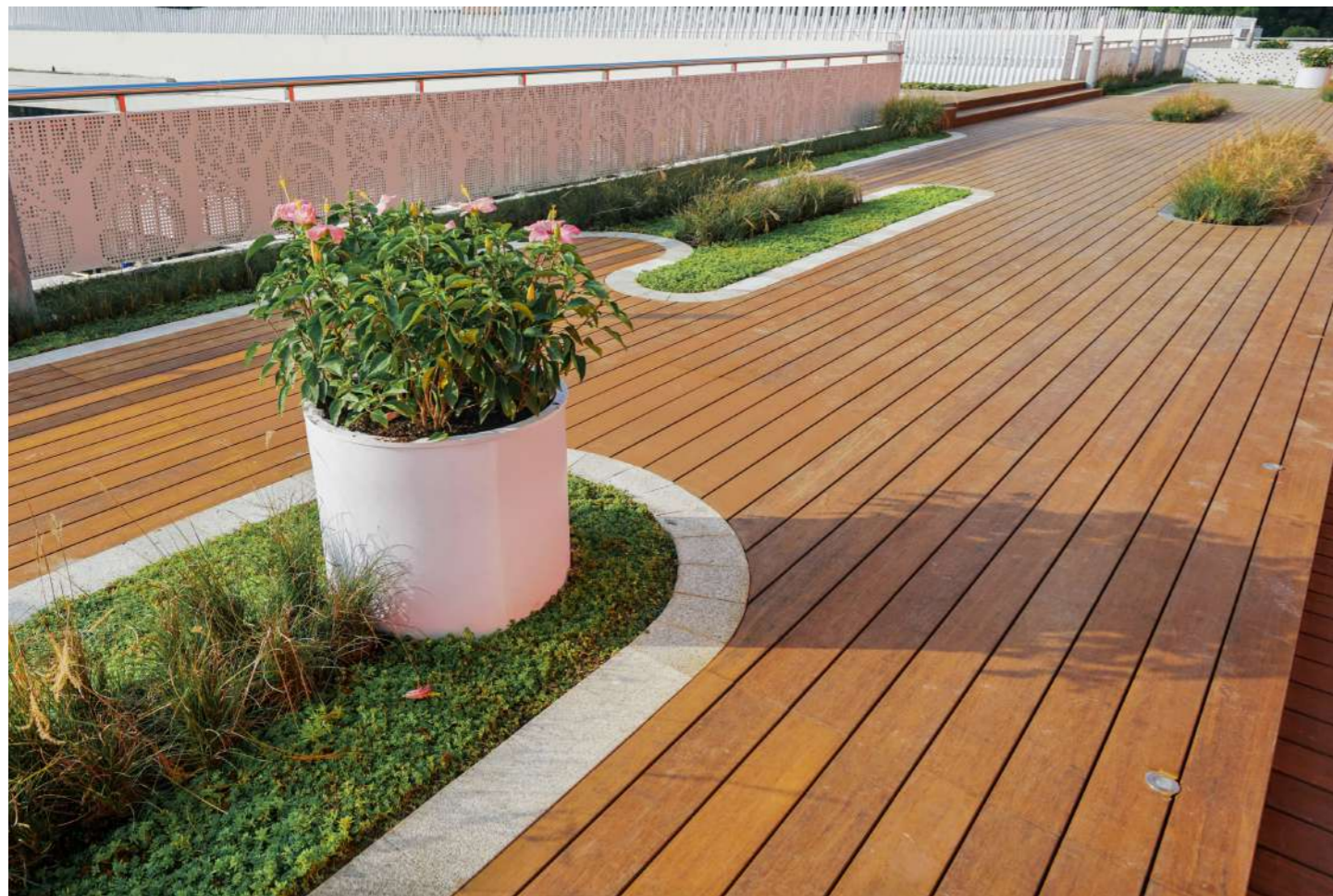
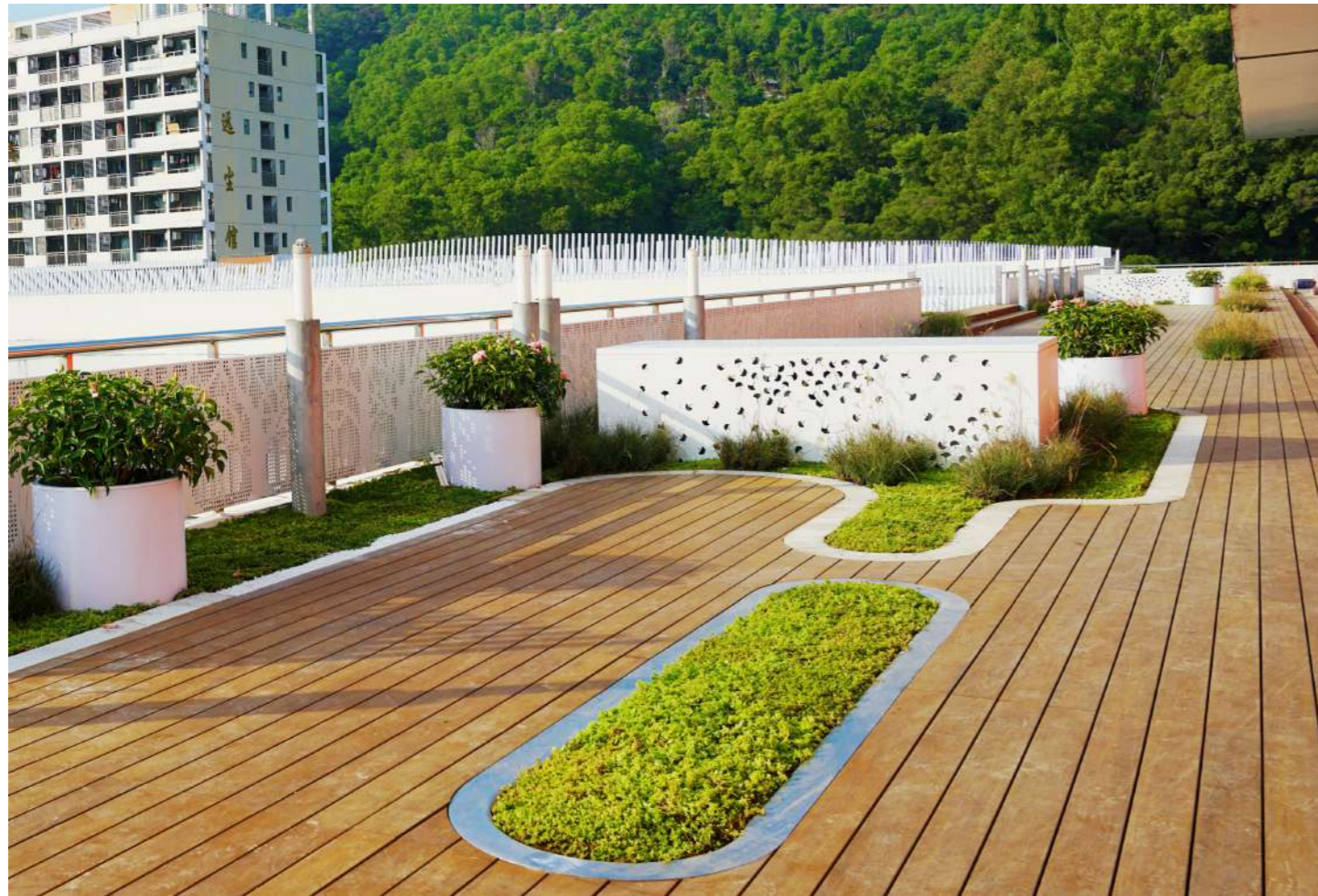


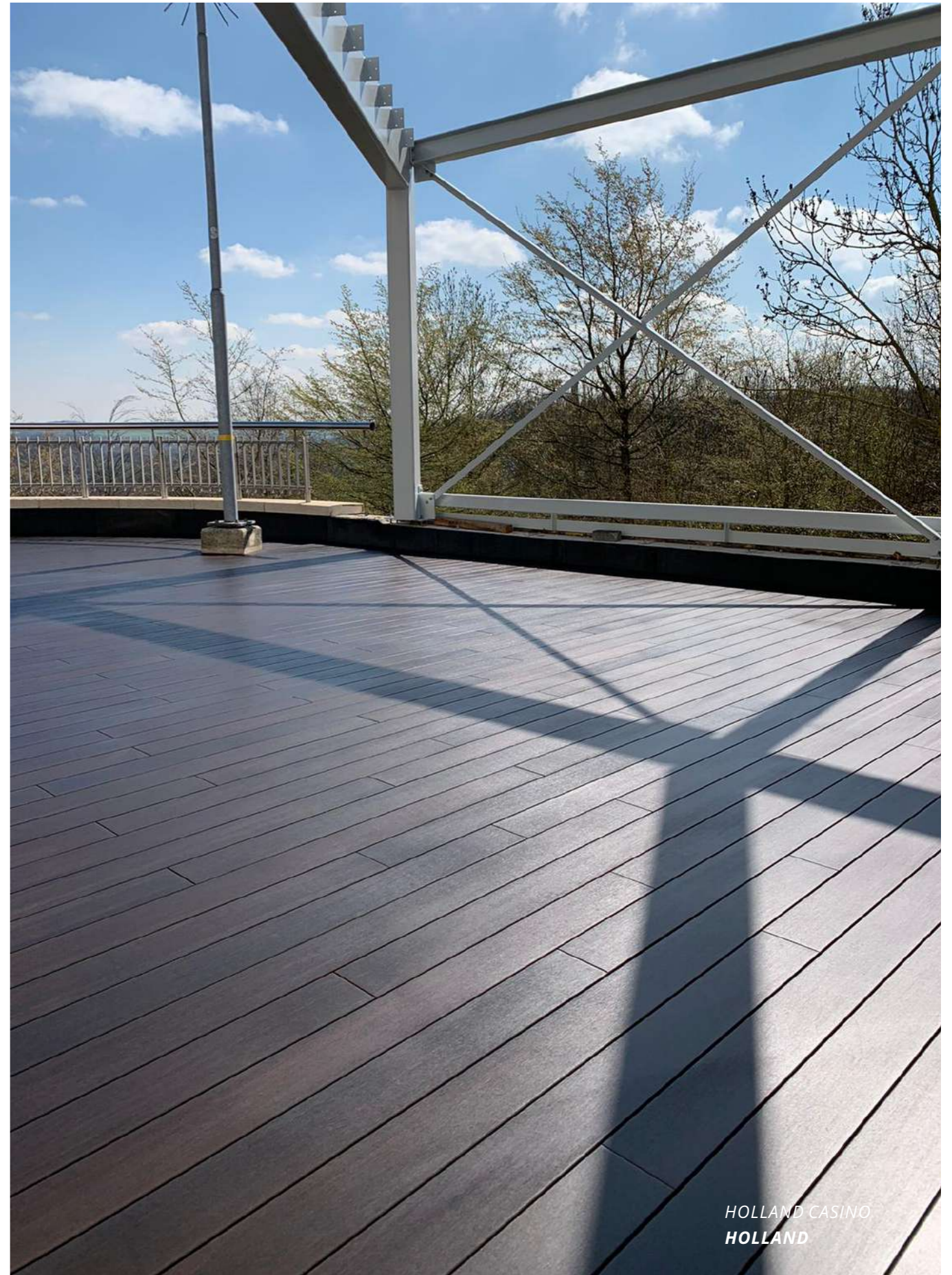


RESIDENTIAL
BRATISLAVA, SLOVAKIA

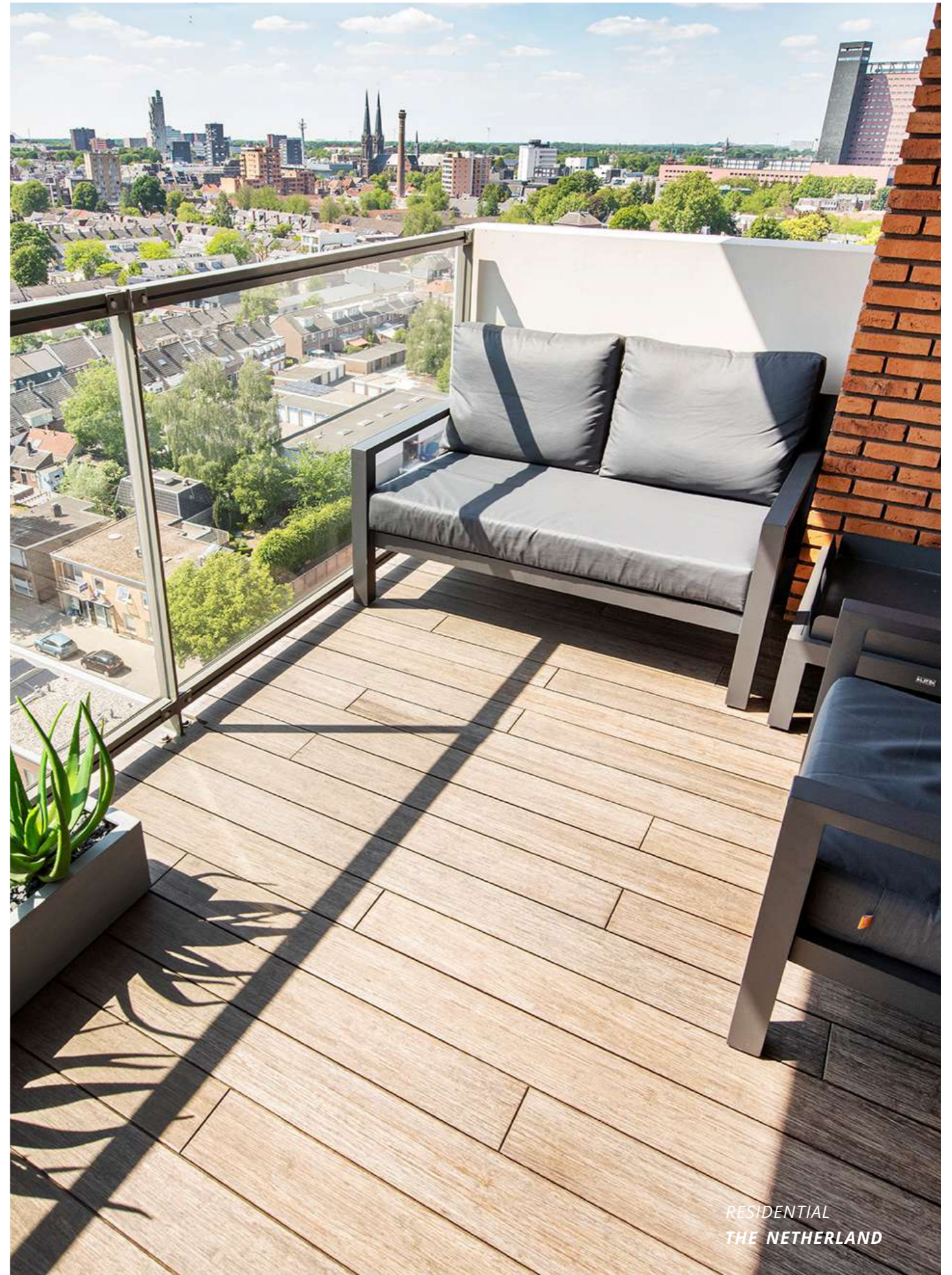


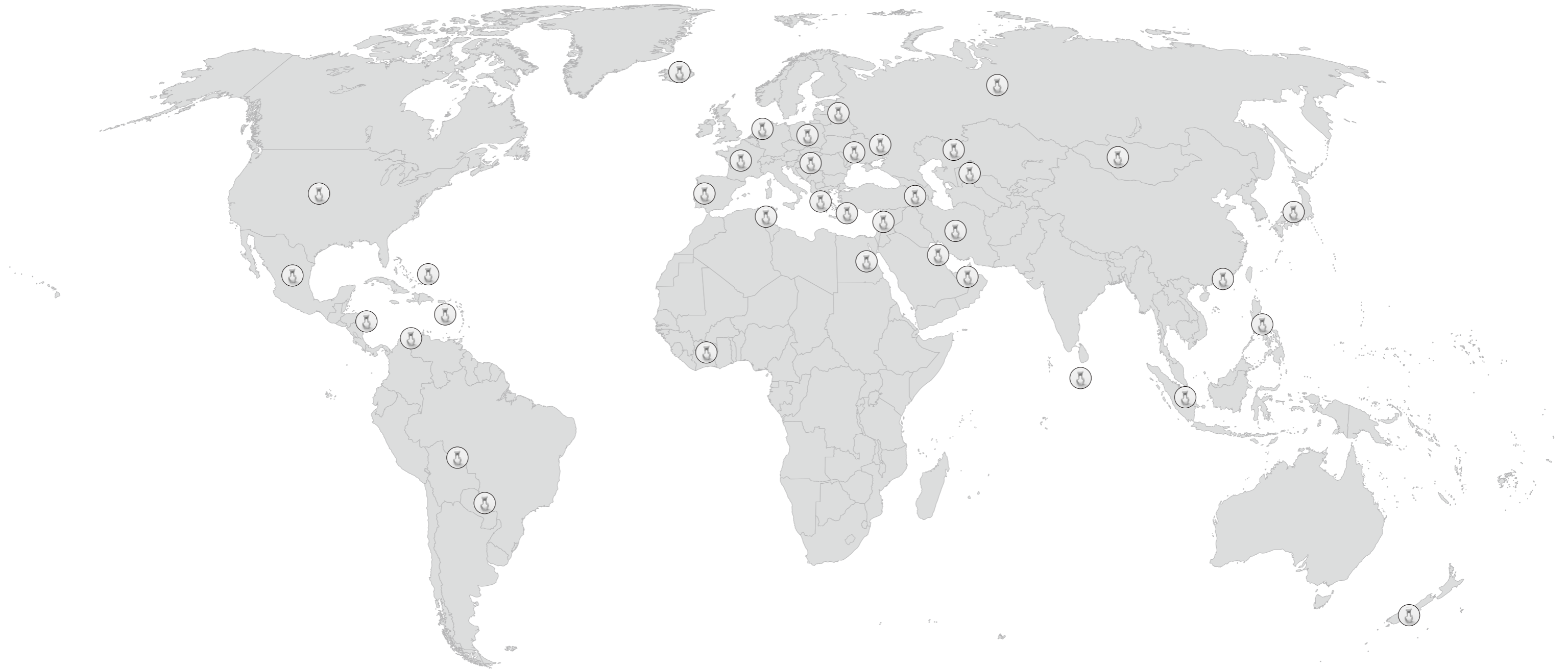






HOLLAND CASINO
HOLLAND





**The Magnet & Dasso Have Been
Embraced In 48 Countries and Regions In 2020**

-
- | | | | | |
|-------------|---------------|------------|-------------|-----------------|
| Andorra | China | Japan | Mauritius | Singapore |
| Algeria | Curacao | K.S.A | New Zealand | The Netherlands |
| Azerbaijan | Dominican Rep | Kazakhstan | Panama | Spain |
| Belgium | Egypt | Lithuania | Paraguay | Tunisia |
| Bulgaria | England | Latvia | Philippines | Ukraine |
| Bolivia | Greece | Lebanon | Qatar | U.A.E |
| Bahrain | Hong Kong | Macao | Romania | U.S.A |
| Colombia | Iceland | Malaives | Russia | Uzbekistan |
| Ivory Coast | Ireland | Mexico | Switzerland | |
| Cyprus | Italy | Malta | Slovakia | |